

Coleman Hot Water On Demand. How To Fix.



Symptom: Starts to heat, then stops heating but the (cold) water keeps flowing

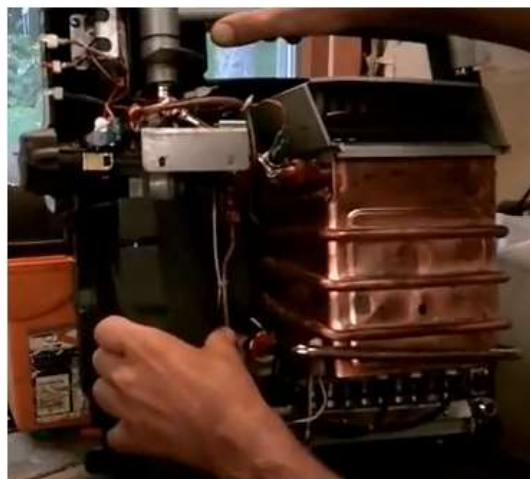
Video: <https://www.youtube.com/watch?v=3Z-3m4Ljwiw>

Fix #1 - Remove the pump from the fill tube and blow into it a few times. No tools. Takes 45seconds.

Fix #2 - Remove water supply hose and power cord. Remove the Right side panel by removing 4 screws

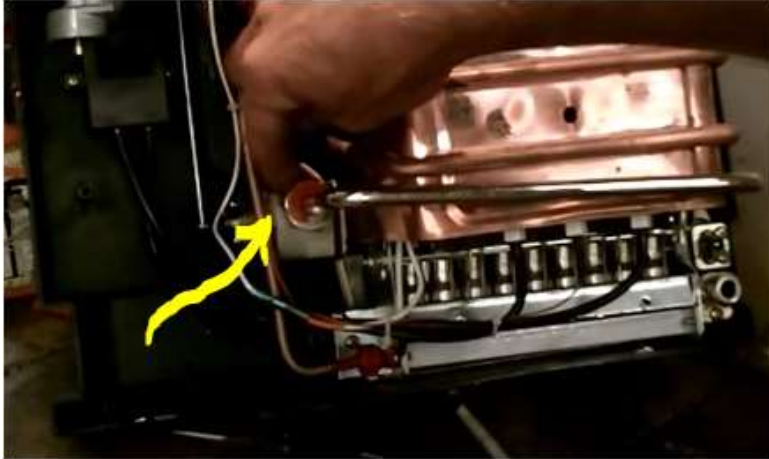


Remove the gas cylinder back-plate by removing 6 small screws. 2 on each side, a 5th under the control knob and the 6th may be on the base of the unit and secures the back-plate to the cover.



Coleman Hot Water On Demand Repairs

Locate the Water Flow Sensor containing an impeller.

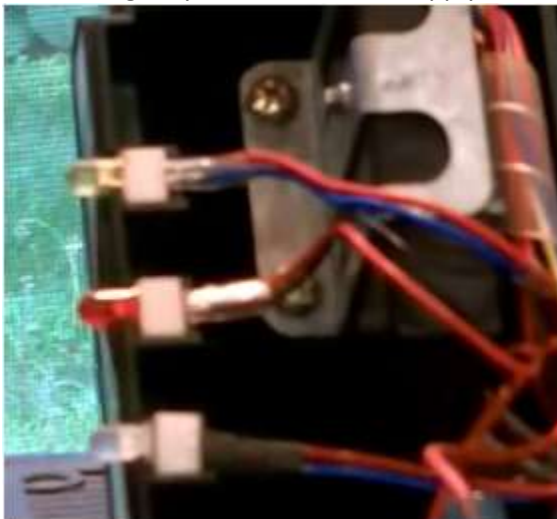


If the impeller doesn't spin or spins incorrectly, the unit thinks that no water is flowing so the heater does not activate.

Use a wrench to loosen the sensor on each side and pull the sensor out just enough to see the impeller inside. Blow or use high-pressure air (preferred) to get impeller spinning freely.



When putting the unit back together make sure the 3 indicator lights, above the control knob, are properly seated. They just sit there and may have fallen out of place when the cover was removed. Insert the gas cylinder, the water supply hose and the pump power cord and it should function properly.



Fix #3 – Blown fuse. The "charging light" will still come on with a blown fuse. It takes a F4AL250v and is located in the circuit board.